

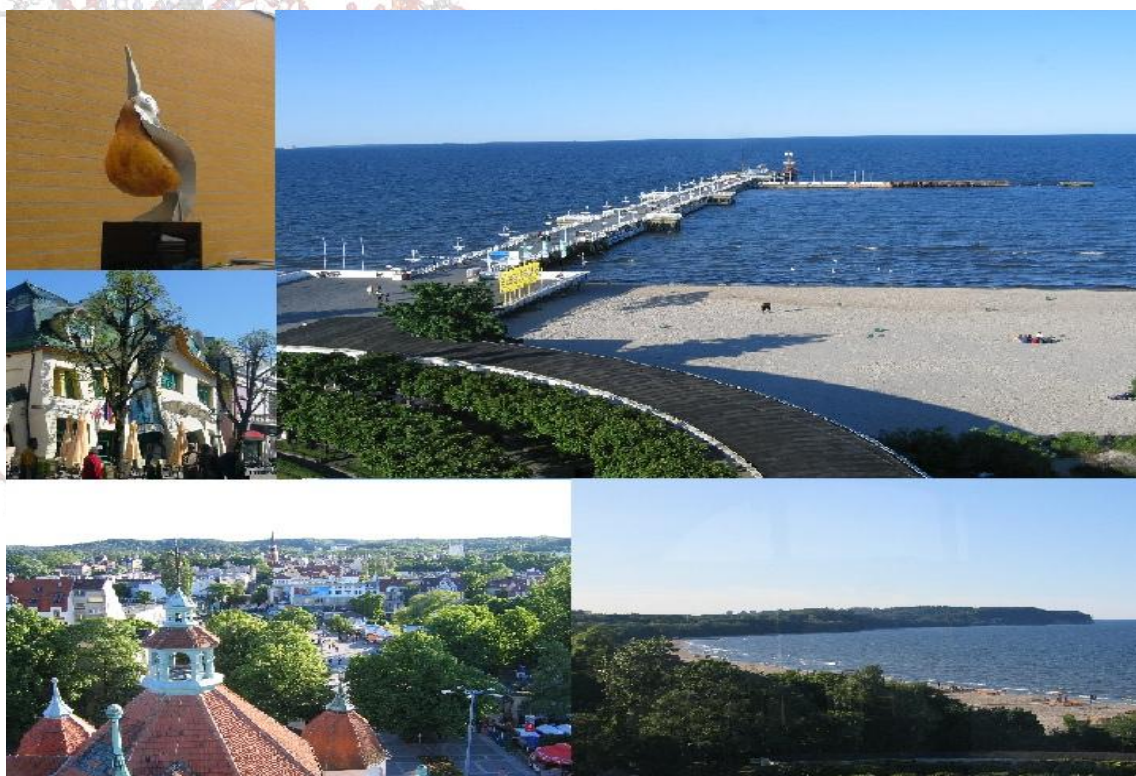
# Radiation Damage in Biomolecular Systems: *Nanoscale Insights into Ion-Beam Cancer Therapy*

## 2nd NANO-IBCT Conference 2013

Training and Rehabilitation Center in Sopot of  
Gdansk University of Technology

Sopot, Poland

20-24 May, 2013



## FIRST ANNOUNCEMENT



## Scope

The 2<sup>nd</sup> Nano-IBCT Conference is organized within the COST framework of the Action MP1002 (Nano-scale Insights into Ion Beam Cancer Therapy). It will take place in **Sopot** (Poland) from **May the 20<sup>th</sup> to May the 24<sup>th</sup>, 2013**. The conference will bring together experts from different disciplines: physics, chemistry, biology, hadron-therapy centers, medical institutions, specialized in the radiation damage of biological matter.

In particular, the following subjects will be discussed:

- Ion propagation in matter
- Primary ionization in the medium, direct damage and production of secondary electrons and radicals
- Propagation of secondary electrons and radicals
- Electron attack on DNA and proteins
- Radiobiological scale effects
- Hadron therapy centers
- Related European projects

## Sponsors

The conference will be held under the auspices of the following sponsors:

- COST Nano-IBCT action (MP1002)
- Gdansk University of Technology (GUT)
- Faculty of Applied Physics and Mathematics of GUT

## Important Dates

- Distribution of the first announcement **18.01.2013**
- Distribution of the second announcement **01.04.2013**
- Deadline for registration **20.03.2013**
- Deadline for abstract submission **20.03.2013**

## Registration

All participants are required to register for Nano-IBCT 2013 before the deadline of March, the 15<sup>th</sup>, 2013. Please register on-line on the [website](#) (the registration procedure will be activated soon). The registration consists of two steps: you will have to fill in a pre-registration form which will be validated by the conference organizer before making the final registration.

In case of any inquiries, please contact the Conference Office at [nano-ibct2013@mif.pg.gda.pl](mailto:nano-ibct2013@mif.pg.gda.pl)

## Registration Fees

Fees to be paid in Polish zloty (PLN) are as follows:

Registration type	Fees (PLN)	Approx. in €
<b>Regular Participant</b>	<b>900</b>	220
<b>Invited Speakers</b>	<b>450</b>	110
<b>PhD Student</b>	<b>210</b>	50
<b>Accompanying Person</b>	<b>250</b>	60

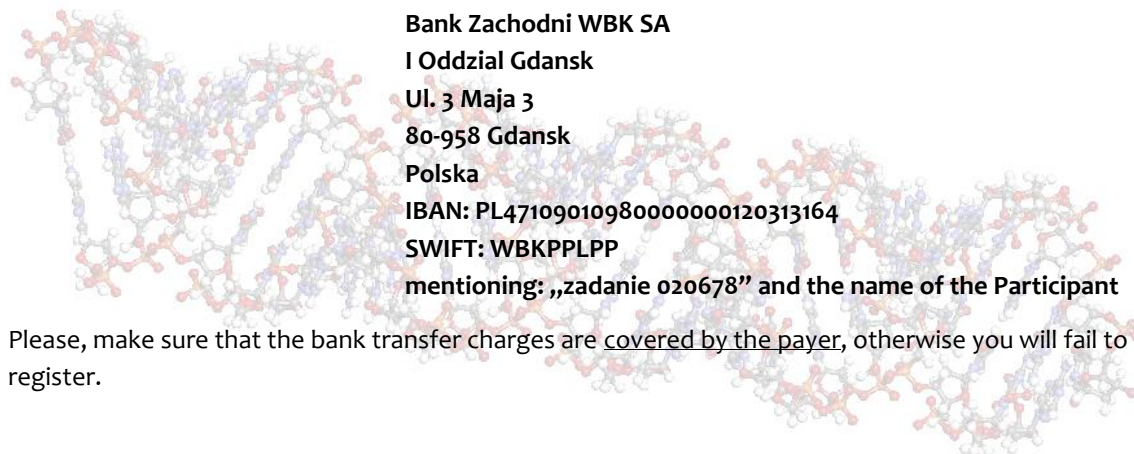
The **Regular Participant** and **Invited Speaker** fees include access to the lecture halls, poster sessions, coffee breaks, book of abstracts, the Welcome Reception on May the 20<sup>th</sup>, Excursion and the Conference Dinner on May the 23<sup>th</sup>.



The **PhD Student** fee includes the same package as for Regular Participants. Students are requested to show a copy of their valid student ID at their arrival to the conference office on the 20<sup>th</sup> of May.

The **Accompanying Person** fee includes the Welcome Reception on May the 20<sup>th</sup>, Excursion and the Conference Dinner on May the 23<sup>th</sup>.

Registration should be done using an on-line form available on the [website](#). The payments should be made by bank transfer **only** to the following bank account:



**Bank Zachodni WBK SA**  
**I Oddzial Gdansk**  
**Ul. 3 Maja 3**  
**80-958 Gdansk**  
**Polska**  
**IBAN: PL47109010980000000120313164**  
**SWIFT: WBKPPLPP**  
**mentioning: „zadanie 020678” and the name of the Participant**

Please, make sure that the bank transfer charges are covered by the payer, otherwise you will fail to register.

## Scientific program

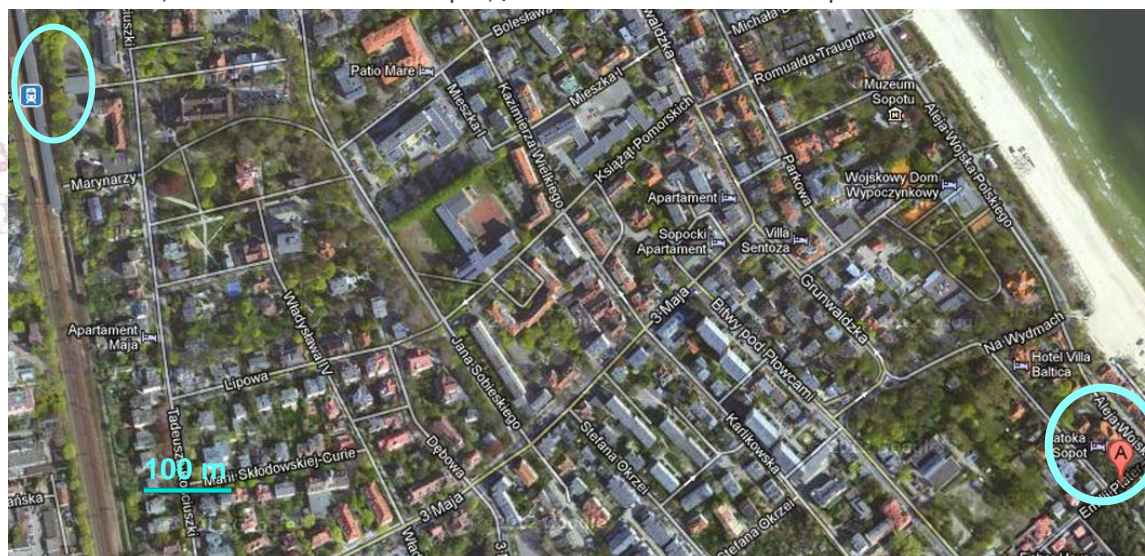
The scientific program for this conference will consist of interdisciplinary sessions, which will include invited lectures on general subjects and progress reports on work carried out within one of five working groups. A number of contributed papers will be chosen by the Scientific and Organising Committees of the Nano-IBCT 2013. Other contributed papers will be presented in a poster session. List of confirmed speakers will be distributed with the second announcement and will appear on the website systematically.

## Preliminary programme

	Monday 20.05	Tuesday 21.05	Wednesday 22.05	Thursday 23.05	Friday 24.05
8.00-9.00		Registration			
9.00-10.00		Welcome and Session I	Session V	Session VIII	Session XI
10.00-11.00		Coffee	Coffee	Coffee	Coffee
11.00-12.00		Session II	Session VI	Session IX	Session XII and final conclusions
12.00-13.00		Lunch	Lunch	Lunch	Lunch
13.00-14.00		Lunch	Lunch	Lunch	Lunch
14.00-15.00		Session III	Session VII	Session X	MC meetings
15.00-16.00		Coffee	Coffee	Coffee	
16.00-17.00		Session IV	Poster session	Excursion and conference dinner	
17.00-18.00					
18.00-19.00	Registration and Welcome reception				
19.00-20.00					
21.00-22.00					
22.00-23.00					

## Conference venue and Travel Info

The conference will take place in [The Training and Rehabilitation Center](#) of Gdańsk University of Technology, [ul. Emilii Plater 7/9/11, 81-777 Sopot](#) ([see location on the map](#)). It is situated next to the beach of the Baltic Sea, close to the centre of Sopot, 700 meters from the famous pier.



Sopot is located approximately 350 kilometers north of Warsaw. You can get to Sopot by air, land and sea.

### By plane

- [Gdansk Lech Walesa Airport](#) - located 15 km from Sopot, with flights to many cities in Europe. From the airport take a taxi to Sopot (60-80 PLN) or bus No. 10 to the railway PKP/SKM station "Gdansk Wrzeszcz" (approx. 20 min.). You can change there for Fast Urban Train called SKM (direction "Gdynia", "Rumia", "Wejherowo", "Lębork" or Słupsk") to reach Sopot (station "Sopot", approx. 10 min.). Change there for a taxi, bus No. 187 (direction "Kamienny Potok", 2 stops) or 143 (direction "Oliwa PKP", 3 stops), or go by foot to the conference venue (approx. 1500 m).
- [Warsaw Frederic Chopin Airport](#) - main polish international airport with flights to many cities in Europe, North America, Asia and Africa. From there you can take a transit to Gdansk (approx. every 2 hours), or take a bus No. 175 or N32, local train or taxi to railway PKP station "Warszawa Centralna" (approx. 25 min.), then take a train to Sopot (every 2 hours or less, the journey lasts approx. 4.5 h). Change there for a taxi, bus No. 187 (direction "Kamienny Potok", 2 stops) or 143 (direction "Oliwa PKP", 3 stops), or go by foot to the conference venue (approx. 1500 m).

### By ferry

- [Polferries](#) - cruises to/from Nynashamn near Stockholm (Sweden). Near the ferry terminal take the bus No. 188 to "Zaspa SKM" or 199 to "Zabianka SKM" and change there for SKM Fast Urban Train to Sopot (direction "Gdynia", "Rumia", "Wejherowo", "Lębork" or Słupsk"). Change there for a taxi, bus No. 187 (direction "Kamienny Potok", 2 stops) or 143 (direction "Oliwa PKP", 3 stops), or go on foot to the conference venue (approx. 1500 m.).
- [Stena Line](#) - cruises between Gdynia (10 km from Sopot) and Karlskrona. Near the ferry terminal take bus No. 105 or 125 (direction "Redlowo") and get off at the "Gdynia Główna" PKP/SKM station. Change there for SKM to Sopot (direction "Gdańsk" or "Tczew"), then change for a taxi, bus No. 187 (direction "Kamienny Potok", 2 stops) or 143 (direction "Oliwa PKP", 3 stops), or go by foot to the conference venue (approx. 1500 m.).

### By train

- [PKP - Polish National Railways](#) - direct and frequent connections from Sopot to all major polish cities, also to Berlin (Germany). Get off at the Sopot station, then change there for a taxi, bus No. 187 (direction "Kamienny Potok", 2 stops) or 143 (direction "Oliwa PKP", 3 stops), or go by foot to the conference venue (approx. 1500 m.).

### By car

- from Berlin via Szczecin, Koszalin and Słupsk
- from the eastern border of Poland via Białystok and Olsztyn
- from the Czech and Slovak border via Cracow and Warsaw
- from the Czech and German border via Wrocław, Poznań and Bydgoszcz
- from the Czech border via Katowice, Częstochowa, Łódź and Toruń (recommened route through the A1 motorway)

## Accommodation

The conference center provides a limited number of rooms of varying standard with a discount price (15 % off with Nano-IBCT password until the 01.05.2013). You may want to ask about the standard of the room while booking it. It is also possible to book your room with breakfast in the restaurant of the center for additional price of 30 PLN.

Room type	Number of rooms available	Price per night (PLN)
Single	10	150
Double	12	205
Triple	7	260
Quad	5	310
Studio (double)	1	250
Apartment (double)	1	300
Apartment (triple)	1	340
Apartment (quad)	1	380

If you wish to be accommodated somewhere else, please refer to the [website](#), where the hotel information is provided

## Official Invitation and Visa

Conference participants are advised to check the passport and visa requirements for travel to Poland well in advance. Information on who may require visa to enter Poland can be found here: [http://www.msz.gov.pl/en/travel\\_to\\_poland/entering\\_poland/visa\\_free/visa\\_free\\_countries](http://www.msz.gov.pl/en/travel_to_poland/entering_poland/visa_free/visa_free_countries)

## Abstracts

### Contributions:

For invited talks and poster contributions, an abstract has to be submitted before the deadline of March, the 20<sup>th</sup>, 2013. Submitted contributions should fall into the scope of the conference in order to be accepted. Some poster contributions will be selected for an oral presentation. The result of the selection will be communicated between the 25<sup>th</sup> and 28<sup>th</sup> of March. Only for registered participants, abstracts will be included in the Book of Abstracts and the corresponding posters are admitted for presentation.

### Abstract format:

The length of the abstract is limited to one A4 page, including figures and tables. You should download one of the different templates from the [website](#), which contains more details on the abstract format.

Recommended software: MS Word (all versions), LaTeX, and Open Office 3.0.

Please upload your abstracts through the [website](#).



## Committees

### Conference Chairs

- Józef E. Sienkiewicz (Gdańsk University of Technology, Gdańsk)
- Małgorzata Śmiałek-Telega (Gdańsk University of Technology, Gdańsk)
- Janina Kopyra (Siedlce University, Siedlce)
- Andrey Solov'yov (Frankfurt Institute for Advanced Studies, Frankfurt)

### Scientific Committee

- David Field (Aarhus University, Denmark)
- Gustavo Garcia (CISC, Madrid, Spain)
- Franco Gianturco (University La Sapienza, Rome, Italy)
- Thomas Haberer (HIT Center, Heidelberg, Germany)
- Bernd A. Huber (CIMAP, Caen, France)
- Nigel Mason (Open University, Milton Keynes, United Kingdom)
- Kevin Prise (Queen's University Belfast, United Kingdom)
- Paul Scheier (University of Innsbruck, Austria)
- Thomas Schlathöler (KVI, Groningen, The Netherlands)
- Andrey V. Solov'yov (FIAS, Frankfurt, Germany)

### Organising Committee

- Gosia Śmiałek-Telega
- Julien Guthmuller
- Patryk Jasik
- Ireneusz Linert
- Marta Łabuda
- Paweł Możejko
- Patrycja Stefańska
- Paweł Syty
- Tomasz Wąsowicz
- Bożena Żywicka-Możejko

### Contact Information

Małgorzata Śmiałek-Telega  
Gdańsk University of Technology  
Faculty of Applied Physics and Mathematics  
Narutowicza 11/12  
80-233 Gdańsk, Poland  
[nano-ibct2013@mif.pg.gda.pl](mailto:nano-ibct2013@mif.pg.gda.pl)

### Nano-IBCT 2013 Conference Web Page and e-mail

<http://nano-ibct2013.mif.pg.gda.pl/>

[nano-ibct2013@mif.pg.gda.pl](mailto:nano-ibct2013@mif.pg.gda.pl)